

Alfonso

P de Apuntar

No. 10

Carola y Panchito

Topo de

Guaracha

CENTRO GENERAL DE AUTORES DE ESPANA LIBRO

Handwritten musical notation system 1. It consists of three staves. The top staff contains three whole rests. The middle staff has a circled 'X' above the first measure. The bottom staff contains a piano accompaniment with chords and eighth notes. A brace on the left side groups the middle and bottom staves.

Handwritten musical notation system 2. It consists of three staves. The top staff contains three whole rests. The middle staff contains a melodic line with eighth notes and chords. The bottom staff contains a piano accompaniment with eighth notes and chords. A brace on the left side groups the middle and bottom staves.

Handwritten musical notation system 3. It consists of three staves. The top staff contains three whole rests. The middle staff contains a melodic line with eighth notes and chords. The bottom staff contains a piano accompaniment with eighth notes and chords. A brace on the left side groups the middle and bottom staves.

*Carola*

En cuanto estemos ca - sa - dos yo se - ré tu quara -  
 El que no veas muy cla - ro des lo que encuentro pe -

The musical score for 'Carola' consists of a vocal line in treble clef and a piano accompaniment in grand staff. The vocal line is in 4/4 time and contains two phrases of lyrics. The piano accompaniment features a simple harmonic structure with chords and a bass line.

*Panchito*

chi - ta La más juncal y bo - ni - ta con o - jos muy  
 no - so pues me pare - ce una ganga que cor - to de

The musical score for 'Panchito' features a vocal line in treble clef and a piano accompaniment in grand staff. The vocal line includes a melodic phrase followed by lyrics. The piano accompaniment provides a rhythmic and harmonic foundation.

*Carmela*

lin dos y bo - ca chi - qui ta ~ Cuando el doctor nos sor -  
 vis ta desul - temies - jo - sa ~ Fe - ro si ni - mos te -

The musical score for 'Carmela' includes a vocal line in treble clef and a piano accompaniment in grand staff. The vocal line has a melodic line with some notes tied across bar lines. The piano accompaniment consists of chords and a bass line.



prenda — tienes q' abra rar me fuer - te -  
 me - mos — tu no po dras co - mo - cer - los



y así tendre mos la suerte que ve - a y com - prenda que so - lo la  
 que di - ran los po - bres ci - tas al ser má - yor - ci - tos si ca - si no



*Panchito*



muerte nos se pa - ra - ra a - ti te aprieta Pan - chi - to -  
 ver los po dra su pa - pa So quiero que de mi - ni - tos -



*Carola*

hasta de far - te extra - pla na — Luego por un lengua -  
 una de ce - na ten ga - mos — y de se gu - ro co

di to to - do me ran a to - mar  
 ba - mos el subsi - dio fa mi - liar

ru qua - ra - cha qua - ra -

BIBLIOTECA GENERAL DE AUTORES DE ESPAÑA LIBROS

chi - ta tu gara - cha voy a ser la qua

ra - cha mas bo - ni - ta que puedo so ñar tu que -

*Panchito*

rer Ay gara - ra - cha gara - ra chi - ta - mi ca -

*Carola*



ri - moerum vol - can      Pues si quie - res a pa -

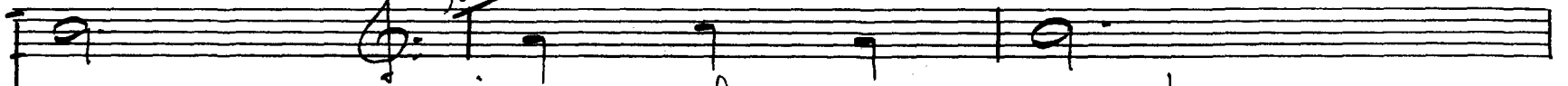


gar lo me de - jar que so pley ve rar

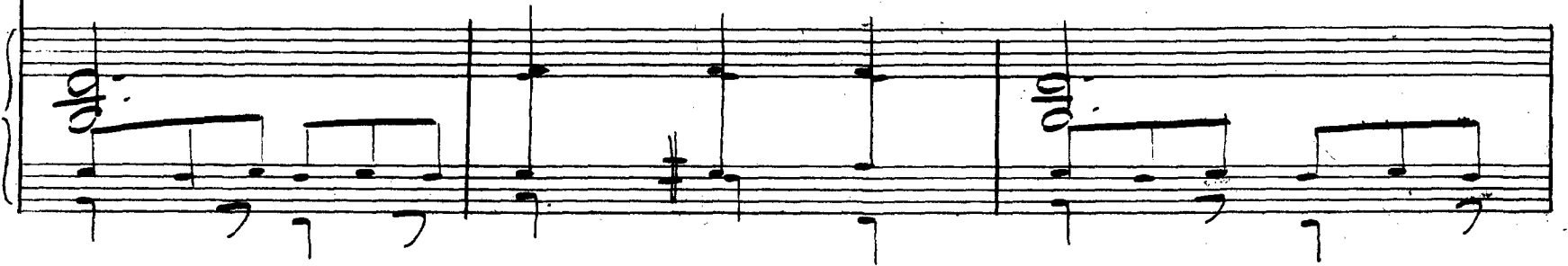


*D. P. Hart*

*Panchito*



ras      ¡ So - pla - me mas !



Carola

Panchito

So - ma mi a mar So - pla - me

The first system of the handwritten musical score consists of two staves. The top staff is a vocal line in treble clef with a common time signature (C). It contains two measures of music with lyrics "So - ma mi a mar" and "So - pla - me". The bottom staff is a piano accompaniment in grand staff (treble and bass clefs). It features a series of chords and melodic lines, with some notes beamed together. There are some handwritten annotations, including a circled "olo" above the piano staff in the second measure.

Carola

más Va - ya ca - lor

The second system of the handwritten musical score consists of two staves. The top staff is a vocal line in treble clef with a common time signature (C). It contains two measures of music with lyrics "más" and "Va - ya ca - lor". The bottom staff is a piano accompaniment in grand staff (treble and bass clefs). It features a series of chords and melodic lines, with some notes beamed together. There are some handwritten annotations, including a circled "olo" above the piano staff in the first and third measures.

Panchito

Carola

so - pla - me más Ren com - pa -

The third system of the handwritten musical score consists of two staves. The top staff is a vocal line in treble clef with a common time signature (C). It contains two measures of music with lyrics "so - pla - me más" and "Ren com - pa -". The bottom staff is a piano accompaniment in grand staff (treble and bass clefs). It features a series of chords and melodic lines, with some notes beamed together. There are some handwritten annotations, including a circled "olo" above the piano staff in the second measure.



*Panchito*

Handwritten musical notation for the vocal line of "Panchito". The melody consists of a quarter note, followed by four eighth notes, and a quarter note. The lyrics are: sion So - pla - me mas

Handwritten musical notation for the piano accompaniment of "Panchito". It features a steady eighth-note bass line and chords in the right hand.

*Carola*

Handwritten musical notation for the vocal line of "Carola". The melody consists of four eighth notes followed by a quarter note. The lyrics are: i Va - ya un so - plon

Handwritten musical notation for the piano accompaniment of "Carola". It features a steady eighth-note bass line and chords in the right hand.

Handwritten musical notation for the piano accompaniment of "Carola", showing the final measures of the piece with a double bar line and a fermata.