

Te espero el siglo que viene

Director

Nº 6

(valida niño)

Prev = Puer si que te han rejuvenecido

Venus à Venus
Ejec = A ~~Mozz~~ y al achicharren

Moderato

Handwritten musical notation for the first system. It features a piano part on the left and a flute part on the right. The piano part includes a *Moderato* tempo marking and a *mp* dynamic marking. The flute part is marked *flou* and *fla*. The system concludes with a double bar line and a slash.

Handwritten musical notation for the second system. It continues the piano and flute parts from the first system. The piano part includes a *mp* dynamic marking. The system concludes with a double bar line and a slash.

Handwritten musical notation for the third system. It continues the piano and flute parts. The piano part includes a *mp* dynamic marking. The system concludes with a double bar line and a slash.

Handwritten musical notation for the fourth system. It continues the piano and flute parts. The system concludes with a double bar line and a slash.

COMPAÑIA GENERAL DE AUTORES DE ESTIMA-LINCOUS

Handwritten musical notation for the first system of piano accompaniment. It consists of two staves. The upper staff contains a complex melodic line with various ornaments, including 'x' marks above notes and a triplet of eighth notes. The lower staff provides a rhythmic accompaniment with eighth and sixteenth notes.

Handwritten musical notation for the second system of piano accompaniment. It consists of two staves. The upper staff continues the melodic line with similar ornaments. The lower staff continues the rhythmic accompaniment.

Handwritten musical notation for the third system of piano accompaniment. It consists of two staves. The upper staff features a long, sweeping melodic phrase with a slur. The lower staff continues the rhythmic accompaniment.

Ello

Handwritten musical notation for the first system of the vocal line. It is a single staff in treble clef with a key signature of one sharp (F#). The lyrics are written below the notes.

A - chi - charrame tú con tu ar dien - te mi

Handwritten musical notation for the fourth system of piano accompaniment. It consists of two staves. The upper staff continues the melodic line with a triplet of eighth notes. The lower staff continues the rhythmic accompaniment.

-rar cal ma ^{ya} la in-quiz-tud que me quiz-re ma - tar

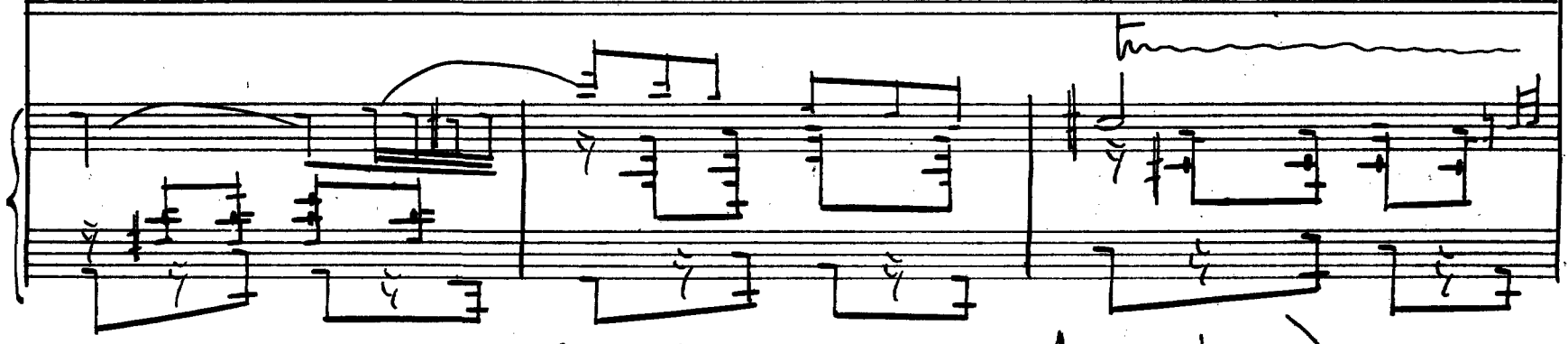
Chicas | A chi-cha-ra-me - tú! | *Ella.* Pon-te cer-ca

cie - lo mi - o por que sien-to mu - cho fri - o

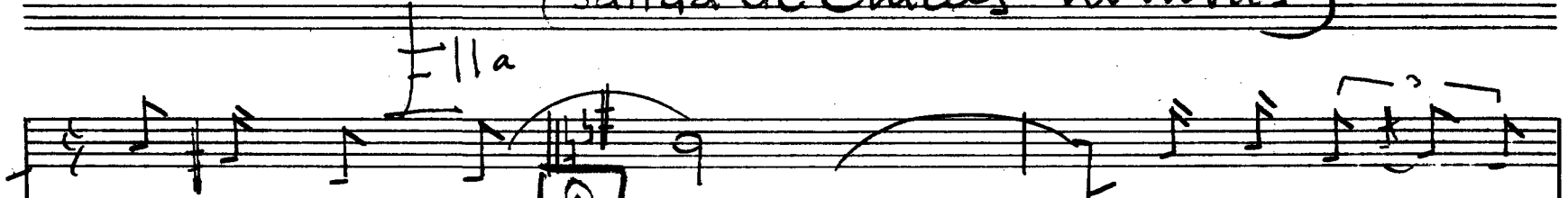
~~no me tra~~



no me tra - tas con des - vi - o que me mu - ro



(Salida de chicas y hombres)



por tu amor. Tu amor es un ra - yo de



luz que i - lu - mi - na el ne - gror de mis no - ches sin cal ma



COLEGIO GENERAL DE ALUMNOS DE...

Tu a - mor es el sol teo - pi -

cal que me abra - sa la piel y en - lo - que - ce mi al - ma

Chicas
Tu a - mor lo - gra - rá con suar

-dor a-vi-var mas la sed de mis cie-gos an-he-los

Ella 3
Tu sed ven a-qui-a so-fo-

trixian mutis triplas

-car que se-re con mi-a mor co-mo bri-sa en el

rall

rall

tu

mar y so-ci-oen la flor

molto vedetta

tu

Solida de Fiples
~~2.º y 3.º~~

SOLEDAD GENERAL DE AUTORES DE ESPAÑA-LIRICOS

Handwritten musical notation for the first system. The system consists of two staves. The upper staff contains a sequence of notes, including a triplet of eighth notes. The lower staff contains a corresponding bass line with various rhythmic values and rests.

4

Handwritten musical notation for the second system. The system consists of two staves. The upper staff features a triplet of eighth notes. The lower staff contains a bass line with various rhythmic values and rests.

Handwritten musical notation for the third system. The system consists of two staves. The upper staff features a triplet of eighth notes. The lower staff contains a bass line with various rhythmic values and rests. The word "chicas" is written above the right side of the system.

Handwritten musical notation for the fourth system. The system consists of two staves. The upper staff features a triplet of eighth notes. The lower staff contains a bass line with various rhythmic values and rests.

Era y triples

Y se - re con mi - a - mor co mo bri - sa en el mar y co - ci - en la

res tu

poco rall

ten

fior

Mutacion

(Cuadro)

aparen Bastanina

ficcipus

triples

timb.

cloro

6

mor es un ra-yo de luz que i-lu-mi-na el no

~~2ª voz Tomás y Típles~~

ror de mis no-ches sin cal-ma Tu a

- mor es el sol-tro-pi-cal que me abra-sa la

COLEGIO GENERAL DE AUTORES DE LOYAMA-LINDOY

pial y en-lo-que-ce mi al-ma Tu-a-

- mor lo-gra ca con suar dor a-vi-var mas la

sed de mis cie-gos an-he-los ~~quiero todo~~ Te

sed ven a - quia so - fo - car

The first system consists of a vocal line and piano accompaniment. The vocal line has a treble clef and a key signature of one flat. It begins with a whole note 'sed', followed by a melodic phrase with a triplet of eighth notes. The piano accompaniment is in the right hand with a treble clef and a key signature of one flat, featuring a triplet of eighth notes. The left hand has a bass clef and a key signature of one flat, with a simple harmonic accompaniment.

yo se re con mia - mor co - mo bri - sa en el mar y ro - ci - o en la

The second system continues the vocal line and piano accompaniment. The vocal line features a triplet of eighth notes. The piano accompaniment includes a triplet of eighth notes in the right hand and a simple harmonic accompaniment in the left hand.

PRELUDIO Acto 2º

flor

Todos Bai - la la Xam - ba del fue - go

(9)

The prelude section begins with a vocal line in a treble clef and a key signature of one flat. It starts with a whole note 'flor', followed by a melodic phrase with a triplet of eighth notes. The piano accompaniment is in the right hand with a treble clef and a key signature of one flat, featuring a triplet of eighth notes. The left hand has a bass clef and a key signature of one flat, with a simple harmonic accompaniment. A bracket labeled '(9)' is placed below the piano accompaniment.

A musical staff in treble clef with a key signature of one sharp (F#). It contains a vocal line with several triplet markings (indicated by a '3' and a bracket) over groups of three notes.

bai - la mi vi - da a su son por que al bai - lar te he de entre - gar

A piano accompaniment for the first system, consisting of two staves (treble and bass clef). It features a steady bass line and chords in the right hand, including a triplet of chords.

A musical staff in treble clef with a key signature of one sharp. It contains a vocal line with accents (>) over the notes 'mi', 'co', 'sa', and 'zon'. The rest of the staff is filled with dense, scribbled-out musical notation.

mi co - sa - zon

A piano accompaniment for the second system, consisting of two staves. It includes performance directions: '(Poco pesante)' in the first measure, 'atrito' above the second measure, and 'acell' above the third measure. The notation includes chords and some melodic lines.

A musical staff in treble clef with a key signature of one sharp. It contains a single note with a fermata (a curved line with a vertical stem) above it, followed by a double bar line.

TELÓN

A piano accompaniment for the third system, consisting of two staves. It features a bass line with notes and chords, and a treble line with chords and some melodic fragments. There are some handwritten annotations and a double bar line.