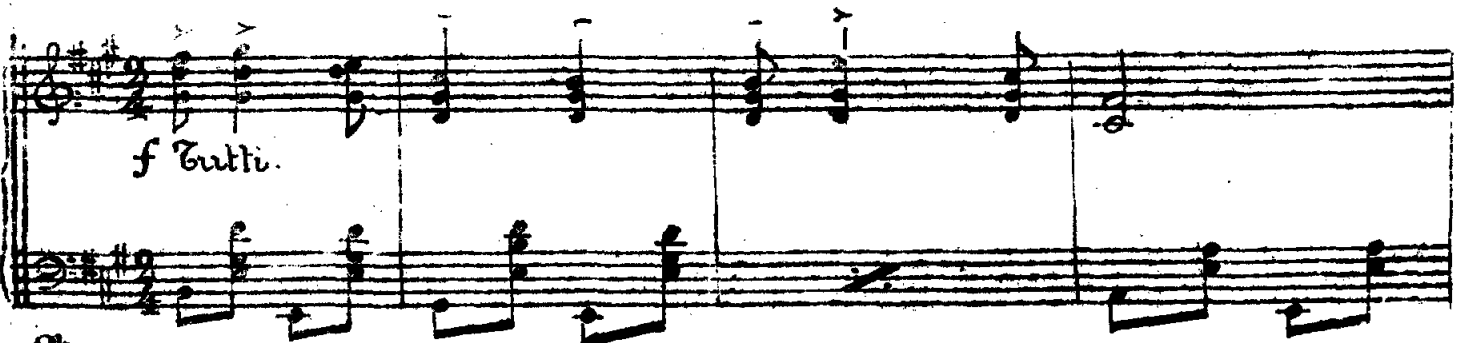
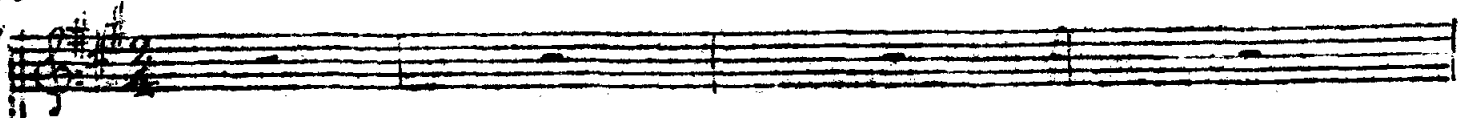


# Nº 5

## Las del Polisoar (Una 1ª tiple y Seis 2ª)

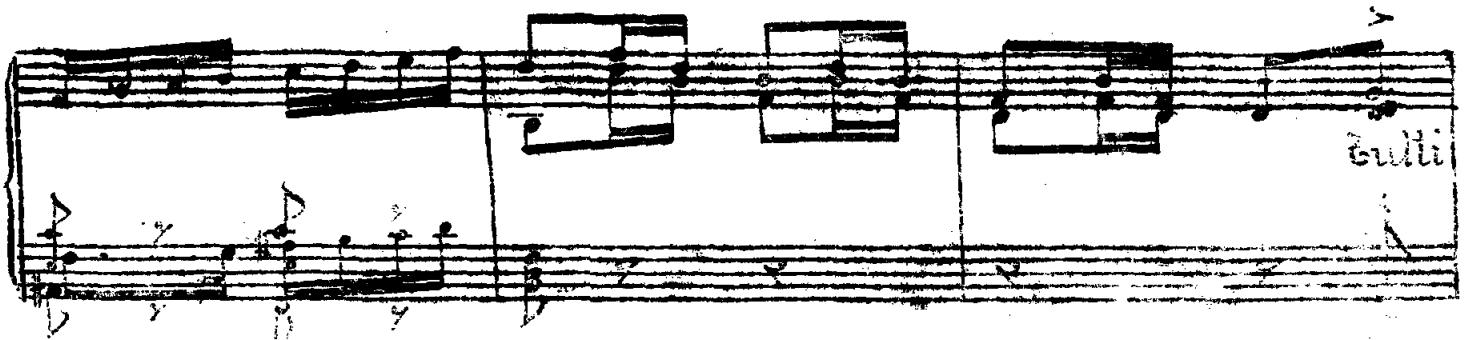
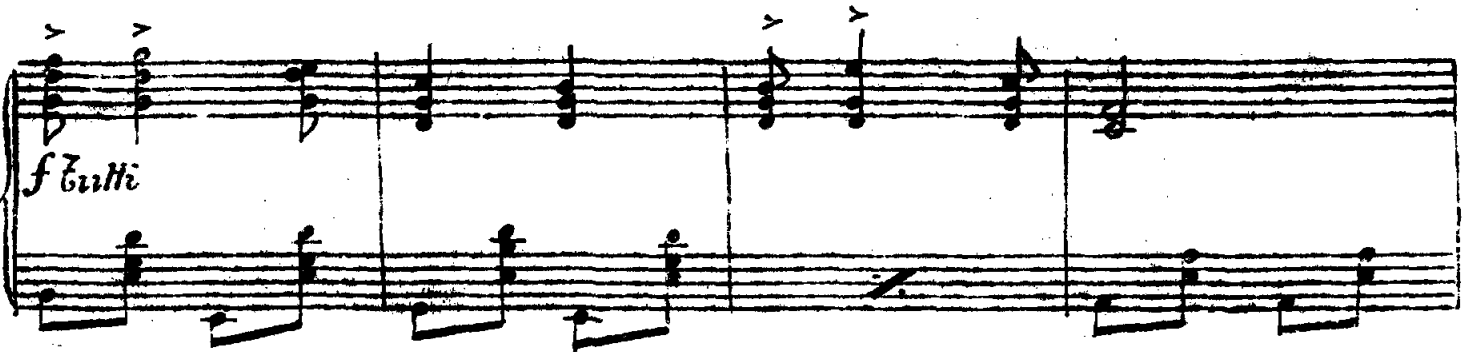
*All.<sup>o</sup>*



Ob.  
Clar.  
V.



Fag.  
Cell.



Todas.

El se - cre - to de una da - ma se le - gan - te quie - re

T

ser (Boca cerrada y dándose en las uñas con el polsinar todas a tpo.)

ha de es - tar - se - gu - ra - men - te en m -

cuarto de Ena 1º = Boca cerrada (como antes)

y lo más in- te- re- san- te q' hay en-

Fin. Cor. 1<sup>o</sup> ad<sup>o</sup>

arpa. Fas. Esp.

Detailed description: This system contains the first two staves of music. The top staff is a vocal line with lyrics. The bottom two staves are piano accompaniment. The key signature has one sharp (F#). The first staff has a fermata over the final note. The second staff has a fermata over the final note. The piano part features chords and moving lines in both hands.

to- do bu- do- ar es sin. ge- ne- ro de du- da el sen-

mod.

Detailed description: This system contains the next two staves of music. The top staff is a vocal line with lyrics. The bottom two staves are piano accompaniment. The key signature has one sharp (F#). The first staff has a fermata over the final note. The second staff has a fermata over the final note. The piano part features chords and moving lines in both hands.

Evoluciones.

ci- llo po- li- mar.

arpa y las f

Tutti. Pro

Fin C. Bajo.

Detailed description: This system contains the first two staves of the 'Evoluciones' section. The top staff is a vocal line with lyrics. The bottom two staves are piano accompaniment. The key signature has one sharp (F#). The first staff has a fermata over the final note. The second staff has a fermata over the final note. The piano part features chords and moving lines in both hands.

mod.

Detailed description: This system contains the next two staves of music. The top staff is a vocal line with lyrics. The bottom two staves are piano accompaniment. The key signature has one sharp (F#). The first staff has a fermata over the final note. The second staff has a fermata over the final note. The piano part features chords and moving lines in both hands.

(101)

2

*P* Hay q<sup>e</sup> te - ner des - tre - za y ma - ña y qui - roba -

Ob. F<sup>te</sup>  
*P* *menas*  
 Tutti. *ma<sup>o</sup> l<sup>to</sup>* arpa.  
 Cello. C. Bajo.

cer. les com - prender q<sup>e</sup> el po - lí - tuar es en mi ma - no mi ins - tru

rall.

arpa.  
 rall.

acell. *Muy moderado.*

mento de pla - cer.  
*pp*  
 f Tutti. Tutti.

3

1ª Tripe (sola)

*P* U-na vie-ja u-ca ca-só con un  
 Hace cuat-ro mes-es q'á un con-sul  
 Ob. Clar.

jo-ven y su llo-ri-que-o no te-ri-a fin por q'el des-de  
 ló-ri-o to-do acon-go-ja-do vi-nou con ce-jal; di-ci-endo me  
 Fla  
 Ob. Clar.

no so pasa-ba las no-ches le-ye-do a ven-tu-ras en un fo-llé-  
 triste que no com-pren-di-a que to-do ne-go-cio le sa-li-a-  
 Fla  
 Vno

*mf*  
 tin. di-me yó sus u-nas ha-ce una se-mana y es tal la ale-  
 mal. di-me yó sus u-nas ha-ce una se-mana le vien a un to-  
 Vno  
 All.  
 Fag.  
 Cui.  
 Cds  
 Cdº  
 Eps.

gi... a de aquella mujer. que ha venido a ver - me ya como un  
 mo - vil con una Co - cot. y dice la gen - te que ti - ra el di -

Ob.  
 Ca.  
 mod.  
 Eps.  
 Co.

car me que en mar - ti - to no ha vuelto a la - er  
 ne - ro gracias a las u - ñas q<sup>e</sup> tie ne el ga - chó

rall.

Epa.  
 Zing.

4 Allegro non molto. (Simula a compás que se dá en las uñas con el polisor)

Con las uñas a los hombres. — la mujer de Beatra -

Um!  
 PP a Eps.  
 FP Arpa.  
 Co.

par ————— y es - to so - lo se con - si - que —————

Al tpo: Todas (nunquam danse)

*un poco rall.*

con el po-li po-li-mar con las u-nas á los

(oscuro) *mas.*

*tps.*

con el polisir en las unns brotando chispas que las iluminan)

hom-bres la mu-jer de-be a-tri-par

Ob. Cor.

yes-to so-lo se con-si-gue, con el po-li, po-li-

Cov. 1.<sup>a</sup> Arpa.

1.<sup>a</sup> 2.<sup>a</sup> Van haciendo nris.

*mar.* *mar.* Ob.

*f* *zutti.* *pp* *Cov. 2.<sup>a</sup>*

Musical score system 1, featuring treble and bass staves with notes and chords. A 'Fag.' marking is present in the bass staff.

Musical score system 2, featuring treble and bass staves with notes and chords.

(Casi dentro mf)

Musical score system 3, featuring treble and bass staves with lyrics: *yes-to so-lo se con-si-que con el*. Includes the instruction *un poco rall.* and a 'Cor. 1º' marking.

Musical score system 4, featuring treble and bass staves with lyrics: *po-li po-li-suar.* Includes the instruction *Tutti.*