

Yus. = Principio de cuadro

"Luces de Madrid"

Director.

Quando estan todos

fuera del cuadro //



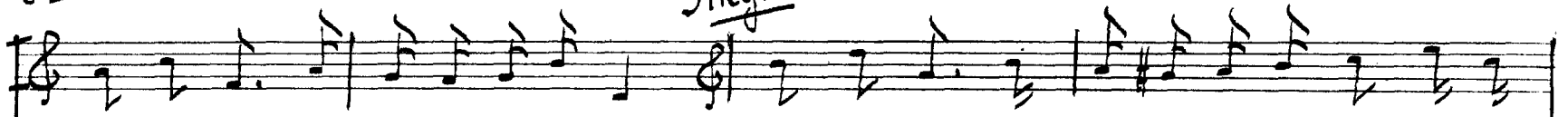
Tovia, Tovia, Suegros y Acompañamiento.

Tiempo de Polka

Tovia

Novio

Siegros



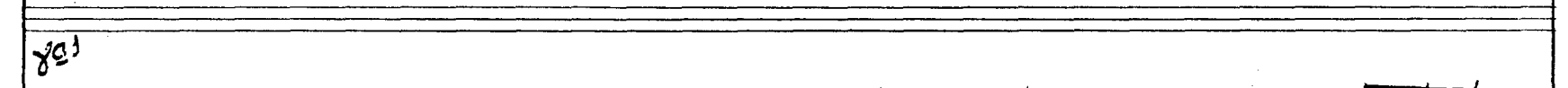
¡ay pa-pá! al fin la con-se-gui. Cui-dala con to-da tui-li-sión no la



(Baile cómico de la época)



-pe-gues sin ra-zón.



CONJUNTO GENERAL DE AUTORES DE ESPAÑA 1950

Handwritten musical score for the first system. It consists of a single staff for the Trompeta (Trumpet) and a grand staff for piano accompaniment. The Trompeta part is written in treble clef and includes a section with a circled '3' and a handwritten '14' above it. The piano accompaniment is written in bass clef and features several triplet markings. The word 'Trompeta' is written above the staff.

Handwritten musical score for the second system. It continues the composition with the Trompeta and piano accompaniment. The Trompeta part has a circled '3' and a handwritten '15' above it. The piano accompaniment continues with triplet markings.

Handwritten musical score for the third system. It includes first and second endings. The first ending is marked '1a' and the second ending is marked '2a'. The Trompeta part has circled '3's and a handwritten '16' above it. The piano accompaniment continues with triplet markings.

Pol-ca, pol-ca pol-ca pol-ca pol-ca a los a-ños ven-tu-ro-sos me re-

*Ob.
Clars*

-pol-ca. El a-ga-cho, el bom-bi, el si-mo-y el ca-fe y el Ban-

*Ob.
Clars*

y Fra

Todos

que-teen la Bom-bi. Con pa-e-l-lay-or-ga-ni. Es-ta pol-ca, pol-ca pol-ca de la

tutt.

3

COULUM DENLIM UL AUIUNO UL LOFANA-LINUDS

lo-da me re - cuer-da nues-tros di-as mas fe - li. ^{170/105} ¡¡Quay-do

lle-ga-ra lo de al fin so-li que di-ce mi ma - ma. ^{Fodos} Nues-tra es-

-ho-ra fue- ra - mos p'al ca-fe' y que nos den el cho-co-la con biz-co-

BOQUERAN GENERAL DE AUTODIDACTA DE FOMAR VIDEOS

-chi

(Corno antes)

Fofofo

Es-ta pol-ca pol-ca pol-ca pol-ca pol-ca me re-

Tovios

-cuerda mu-chos di-as mas fe - li. *Cuan-do lle-ga-ra' lo deal-*

gas

This system contains the first two staves of a handwritten musical score. The top staff is a vocal line in G major, 4/4 time, with lyrics: "-cuerda mu-chos di-as mas fe - li. Cuan-do lle-ga-ra' lo deal-". The bottom staff is a piano accompaniment in G major, 4/4 time, with a key signature of one sharp (F#) and a common time signature (C). The piano part features a steady eighth-note accompaniment in the right hand and chords in the left hand. A dynamic marking of *gas* is written above the first measure of the piano part.

Todos

fin so-li que di-ce mi ma - ma. *Nuestra en-ho-ra bre, va mes*

This system contains the second two staves of the handwritten musical score. The top staff is a vocal line in G major, 4/4 time, with lyrics: "fin so-li que di-ce mi ma - ma. Nuestra en-ho-ra bre, va mes". The bottom staff is a piano accompaniment in G major, 4/4 time, with a key signature of one sharp (F#) and a common time signature (C). The piano part continues with a steady eighth-note accompaniment in the right hand and chords in the left hand.

p'al ca-fe y que nos den el cho-co-la con biz-co-chi *Trompeta*

This system contains the final two staves of the handwritten musical score. The top staff is a vocal line in G major, 4/4 time, with lyrics: "p'al ca-fe y que nos den el cho-co-la con biz-co-chi". The bottom staff is a piano accompaniment in G major, 4/4 time, with a key signature of one sharp (F#) and a common time signature (C). The piano part continues with a steady eighth-note accompaniment in the right hand and chords in the left hand. A dynamic marking of *Trompeta* is written above the final measure of the piano part.

Fodos

Pol-ca

Y Pas

Jas Cda

Trón

de la boda es la que es de moda.

Mai

Prop

Ya los

pu-ros nos ha da-do a quiel pa-dri. va-mos pa los

musical notation for piano accompaniment, including a *tutti* marking.

(formar Cuadro plástico)

ri-pes y pi-ran-do pa lla-drid.

musical notation for piano accompaniment, ending with a double bar line.

~~re-pes y pi-ran-do~~

~~Es un fragmento de un~~

Es un fragmento de un ~~fragmento de un~~ sigue acorde ~~en el fragmento~~