

Escena al Comico

I de Apuntar

Final Acto 2º

PRIMAVERA EN FLOR



Epo de Bosc (mebio lpa)

Flores (saliba)

Las ngu-je-res

bo-ni-tas son co-mo las ro-sas de mi ro-sal

The first system of the handwritten musical score consists of two staves. The upper staff is a vocal line with a treble clef, containing three measures of music with lyrics underneath. The lower staff is a piano accompaniment with a grand staff (treble and bass clefs), containing three measures of music with chords and melodic lines.

de un gran ro-sal que siem-pre en flor que siem-pre en flor es -

The second system of the handwritten musical score consists of two staves. The upper staff is a vocal line with a treble clef, containing three measures of music with lyrics underneath. The lower staff is a piano accompaniment with a grand staff, containing three measures of music with chords and melodic lines.

-ta y en las ro-sas de-se-ro-sal

The third system of the handwritten musical score consists of two staves. The upper staff is a vocal line with a treble clef, containing three measures of music with lyrics underneath. The lower staff is a piano accompaniment with a grand staff, containing three measures of music with chords and melodic lines.

co-mua - be - jas va - ya li - bar - los queda - ngor

co-moi - de - al so - nan - do siemp - pre es - tán

① El que quie - ra pro - bar — lo me - jor del a

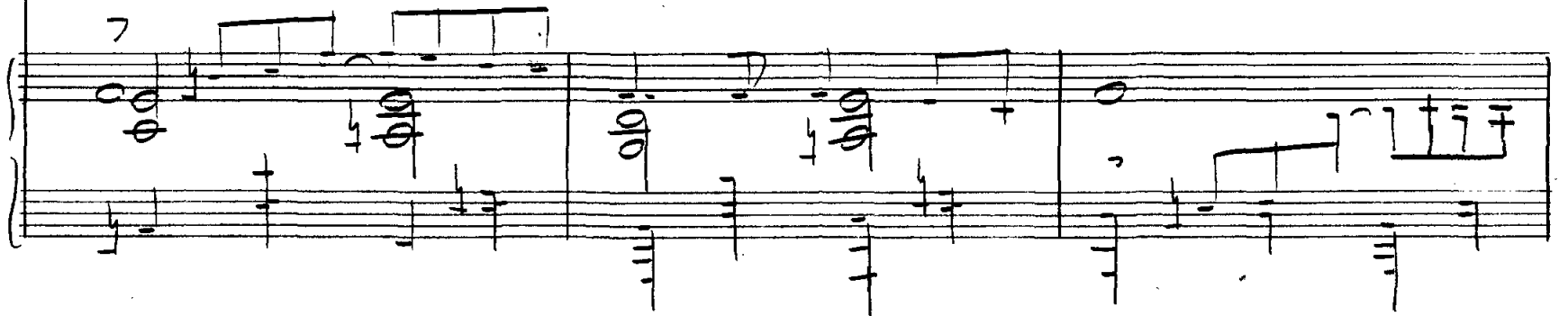
mejor que sea-cer-que al ro-sal-que to-do el es-

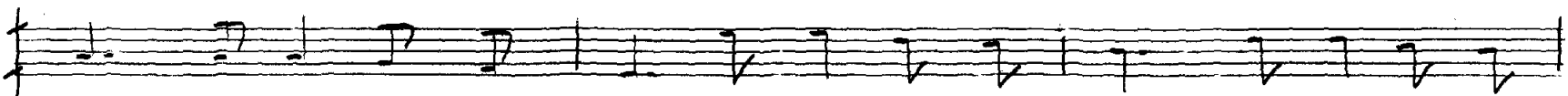


te cu-bier-to de ro-sas en flor El que quie-ra pro-

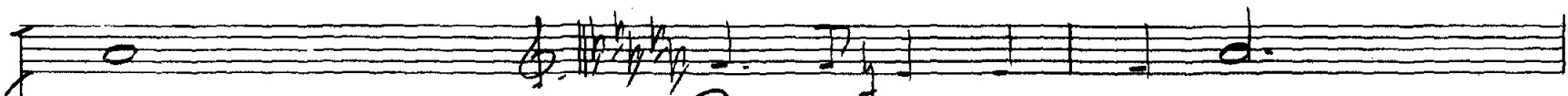
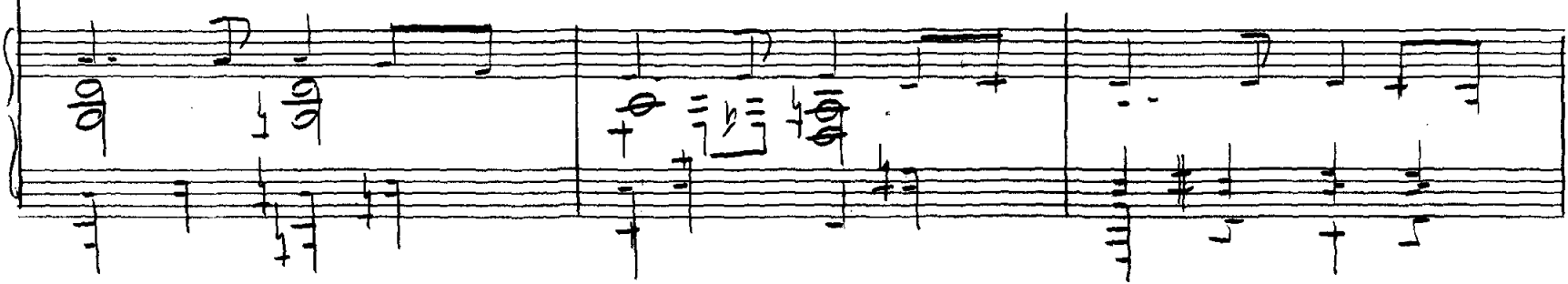


bar lo me-jor' del-a-mer -





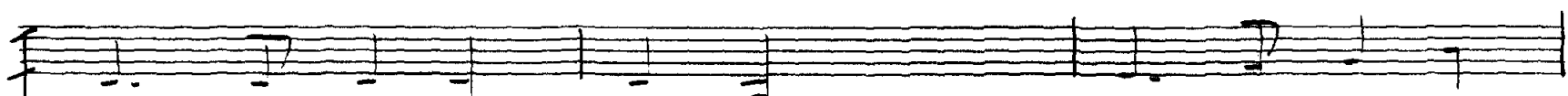
que sea-ces q' amor - sal que to-da el es - te cu-bier-to de



flor

Da fa-ja de sus ra-mas

2



siem - te la ca - ri - cia de m - ras ma - ras



Handwritten musical score for the first system. The vocal line is on a single staff with a treble clef and a common time signature. The lyrics are "ma- nos deu- ra ling- da mu- jer - ci- ta". The piano accompaniment consists of two staves: the upper staff has a treble clef and the lower staff has a bass clef. The music is written in a simple, folk-like style.

ma- nos deu- ra ling- da mu- jer - ci- ta

Handwritten musical score for the second system. The vocal line is on a single staff with a treble clef and a common time signature. The lyrics are "Por que las mu- je- res son co- mo las". The piano accompaniment consists of two staves: the upper staff has a treble clef and the lower staff has a bass clef. The music is written in a simple, folk-like style.

Por que las mu- je- res son co- mo las

Handwritten musical score for the third system. The vocal line is on a single staff with a treble clef and a common time signature. The lyrics are "ro- ras que con su per- fu- nge nos em-". The piano accompaniment consists of two staves: the upper staff has a treble clef and the lower staff has a bass clef. The music is written in a simple, folk-like style.

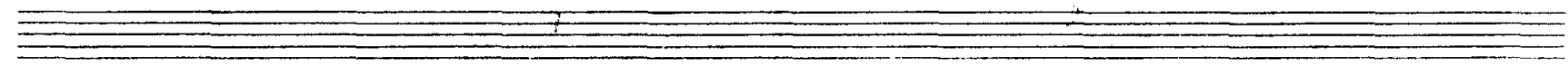
ro- ras que con su per- fu- nge nos em-

- bria-gan y con-vi-dan a so-ñar que bien se

3

sue-ña — ba-jo de un ro-sal

Barbe



Handwritten musical notation on a grand staff. The upper staff contains a whole note chord with a slur above it. The lower staff contains a melodic line with notes and rests. A handwritten annotation "(poco)" is written above the second measure of the lower staff. The system concludes with a complex chord structure in the lower staff.

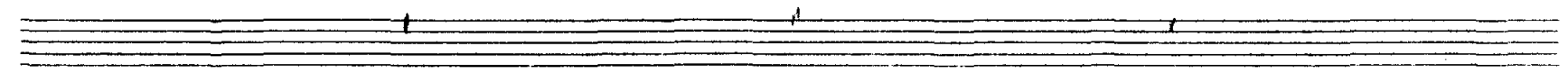
Handwritten musical notation on a grand staff. The system begins with a key signature of two sharps (F# and C#) and a 3/4 time signature. The upper staff contains a melodic line with notes and rests, including a slur. The lower staff contains a bass line with chords. Annotations include "fal modo" written above the first measure and "mf" written below the first measure.

Handwritten musical notation on a grand staff. The upper staff contains a melodic line with notes and rests, including a slur. The lower staff contains a bass line with chords.

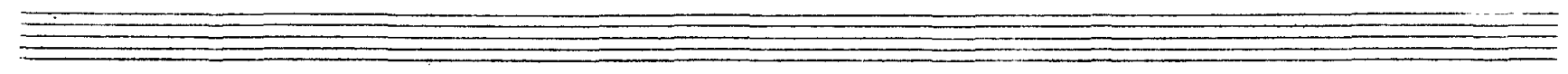
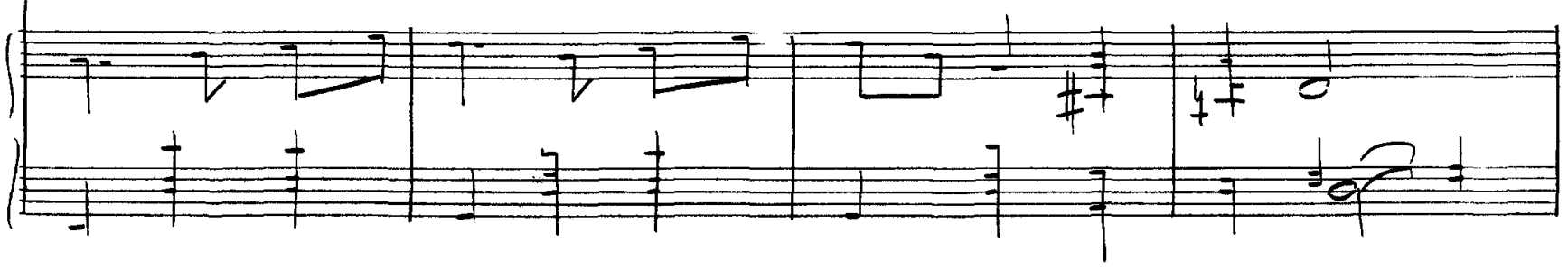
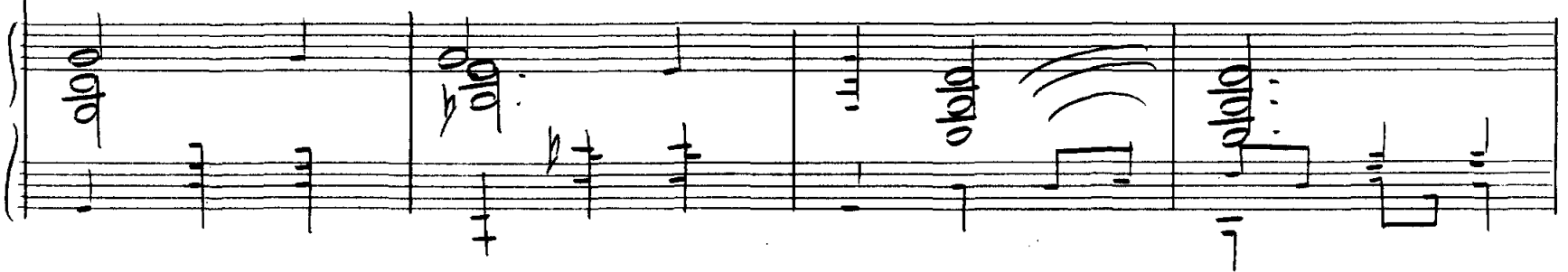
Handwritten musical notation on a grand staff. The upper staff contains a melodic line with notes and rests. The lower staff contains a bass line with chords. A handwritten annotation "poco" is written vertically below the second measure of the lower staff.



This image shows a handwritten musical score for guitar, consisting of five systems of staves. Each system includes a treble clef staff with a key signature of one sharp (F#) and a common time signature (C). The notation is a mix of standard musical symbols and guitar-specific shorthand. The first system features a circled '7' above a note in the treble staff, with a double slash (//) below the bass staff. The second system includes a 'D' chord symbol above the treble staff and a '5' below a note. The third system has a '5' below a note and a '5 # F# J' sequence below the treble staff. The fourth system contains a 'D' chord symbol above the treble staff and a '1' below a note. The fifth system includes a 'D' chord symbol above the treble staff and a '1' below a note. The score is written in black ink on white paper.



Allegro



SOCIEDAD GENERAL DE AUTORES DE COLOMBIA

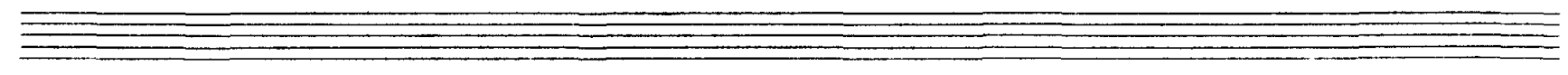
aquí

6

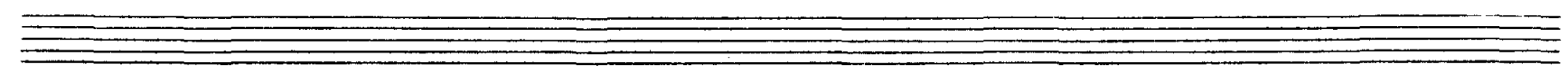
(como antes)

The image shows a handwritten musical score on five staves. The notation is somewhat sketchy and includes various musical symbols:

- Staff 1:** Starts with a circled number '6' and the word 'aquí' written above the staff. It contains several notes and rests, with a large scribble over the end of the staff.
- Staff 2:** Contains notes and rests, with the handwritten instruction '(como antes)' written below the staff.
- Staff 3:** Features notes, rests, and dynamic markings such as 'p' (piano) and 'D' (forte).
- Staff 4:** Includes notes, rests, and dynamic markings like 'p' and 'D'. There are some scribbles and a double slash '/' at the end of the staff.
- Staff 5:** Contains notes, rests, and dynamic markings like 'p' and 'D'. It ends with a double slash '/'.



Tempo de One Step.



todos

za xi ta

xi ! di cen me a mi lle ve me al

co-mi-co ha-gael fa- vor

chicas

Ca - xi - leo

frer - con su bue - na pro - pri - ta.

Ca

SOCIETAT GENERAL DE AUTORES DE L'ART LIRIC

-si si al co - mi - co

The first system of the handwritten musical score consists of three staves. The top staff is a vocal line with a treble clef, containing a half note followed by a quarter note, then a half note, and finally a quarter note. The lyrics '-si', 'si al', and 'co - mi - co' are written below the notes. The middle staff is the piano accompaniment, starting with a treble clef and a key signature of one sharp (F#). It features a series of chords and melodic fragments, with some notes beamed together. The bottom staff is the piano accompaniment in the bass clef, showing a steady bass line with chords.

lle ga en - se - qui - da

The second system of the handwritten musical score consists of three staves. The top staff is a vocal line with a treble clef, containing a half note, a quarter note, a half note, and a quarter note. The lyrics 'lle ga en - se - qui - da' are written below the notes. The middle staff is the piano accompaniment, continuing the harmonic structure with various chords and melodic lines. The bottom staff is the piano accompaniment in the bass clef, providing a solid harmonic foundation.

per — que —

The third system of the handwritten musical score consists of three staves. The top staff is a vocal line with a treble clef, containing a half note, a quarter note, and a half note. The lyrics 'per — que —' are written below the notes. The middle staff is the piano accompaniment, featuring chords and melodic lines. The bottom staff is the piano accompaniment in the bass clef, showing a bass line with chords.

qui - sie - ra yo ver la re -

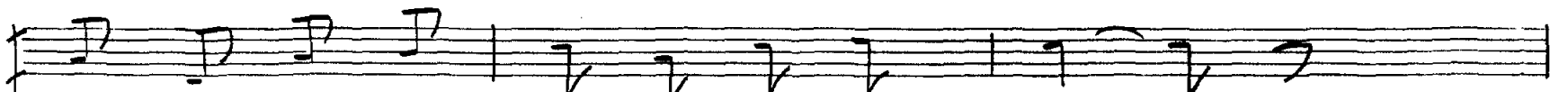
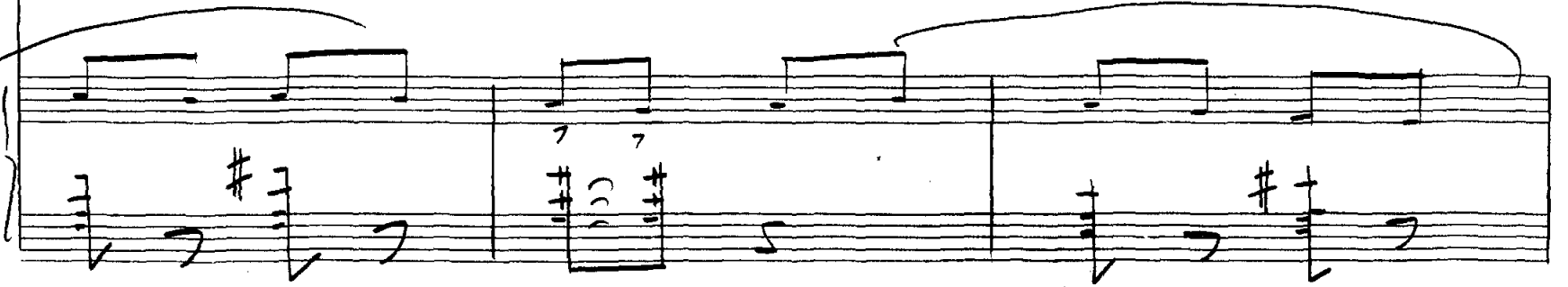
vis - ta

en don - de ha ces la re - vis ta con ac

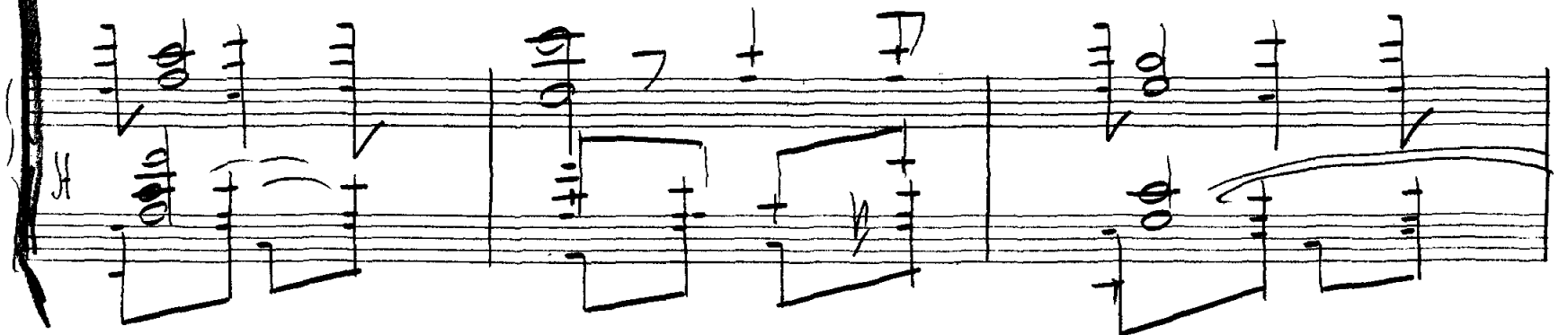
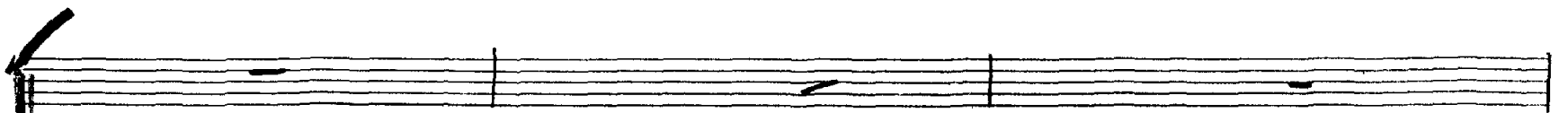
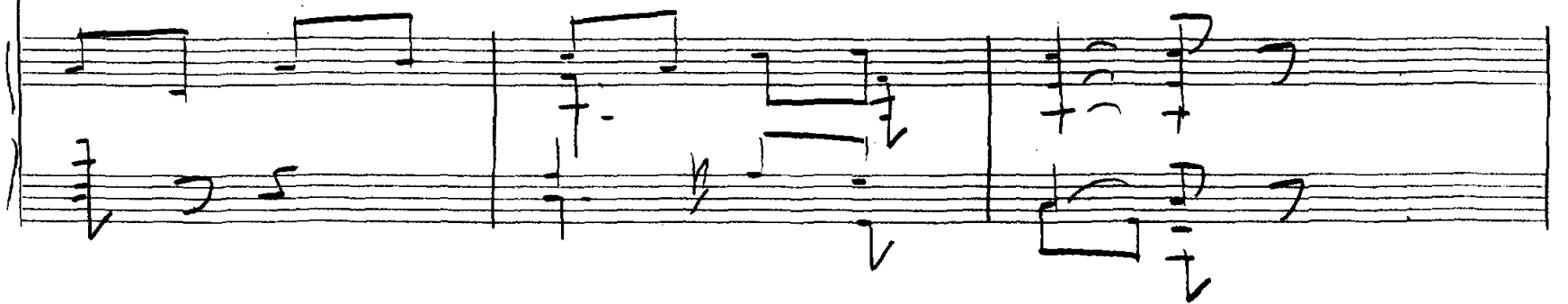
chofer



- to - res muy gra cio ros y un plan tel de chi cas



qua pas que son la dis - lo ca - cion



Handwritten musical notation for the first system. It consists of a vocal line on a single staff and a piano accompaniment on a grand staff (treble and bass clefs). The vocal line begins with a whole note, followed by a quarter note, and then a half note. The piano accompaniment features chords and moving lines in both hands.

Handwritten musical notation for the second system. The vocal line starts with a whole note, followed by a quarter note, and then a half note. The lyrics "ga - xi ta -" are written below the notes. Above the vocal line, the word "Todos" is written in a cursive script. The piano accompaniment continues with chords and moving lines.

Handwritten musical notation for the third system. The vocal line begins with a whole note, followed by a quarter note, and then a half note. The lyrics "- si di - cen mea mi lle - ve - ge al" are written below the notes. The piano accompaniment continues with chords and moving lines.

Co-mi-co ha-gael fa- vor

Handwritten notes:
V.
V.